

This online guide was created by Bob Childs to help people recognize the **Asian Longhorned Beetle**.

This slide show will automatically advance every 10 seconds. You may click forward or back simply by mouse clicking on a the slide, or use the up/downward arrows on your keyboard.

*Together, armed with information we may be able to successfully combat this pest.*



Image by Robert Childs, UMass Amherst





Image by Robert Childs, UMass Amherst

The Asian Longhorned Beetle originates from the Far East, mainly China. It is an attractive insect but it is remarkably destructive to many of our native hardwood trees in North America.

Therefore, it is important to recognize it early and then to report it immediately to local, state or federal agencies (see the last slide for reporting).

Look at the following slides to determine if Asian Longhorned Beetle (ALB) is what you might be seeing on your trees.





This is a **male**, which has antennae that are much longer than the body.

The **female** has antennae about as long as the body.

- Adult body length ranges from 0.75" – 1.5"
- Crisp white spots on the back
- Body color is a shiny 'patent-leather' black
- Antennae are as long or longer than the body
- Antennal segments alternate between white and black
- The 'feet' appear blue while the insect is alive



# Don't Confuse the Asian Longhorned Beetle with Native Longhorned Beetles

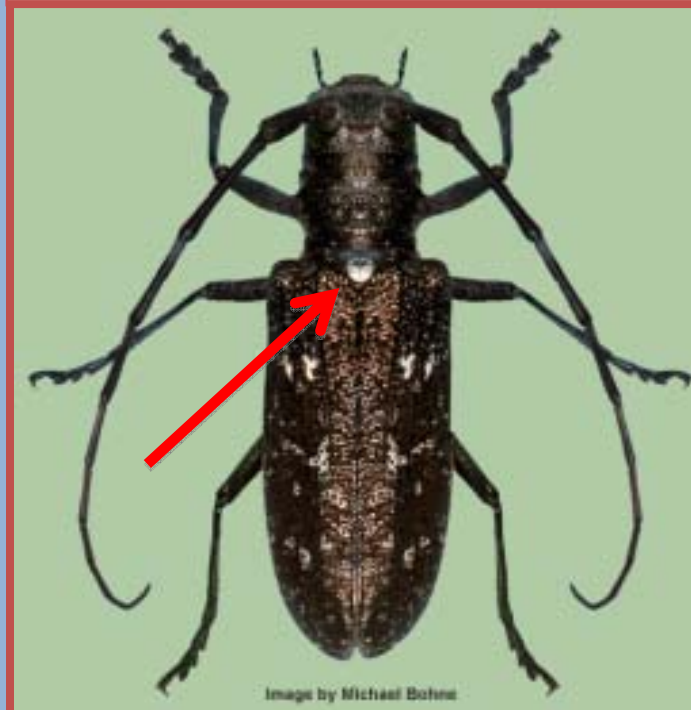
## Asian Longhorned Beetle

Image by Robert Childs, UMass Amherst



- Adult body length ranges from 0.75" – 1.5"
- Crisp white spots on the back
- Body color is a shiny 'patent-leather' black
- Antennae are as long or longer than the body
- Antennal segments alternate between white and black
- The 'feet' appear blue while the insect is alive

## White Spotted Pine Sawyer *Monochamus scutellatus*



- Mottled grey coloration
- Diffuse white spots
- Characteristic white spot in the center behind the head
- Attacks weak white pines
- Not considered to be a pest.



# How To Recognize

# Asian Longhorned Beetle (*Anoplophora glabripennis*)



Image by Robert Childs, UMass Amherst

Female beetles chew an egg-laying pit through the tree bark and deposit one egg in each.



Image by Robert Childs, UMass Amherst

The male beetle (closest in the photograph) often stays with the female after mating while she chews an egg-laying pit through the bark of the tree. His presence prevents other males from mating with her.



# How To Recognize



Image by Robert Childs, UMass Amherst

Egg-laying pits chewed by the female beetle may be up to 3/4" across and are an orange color when fresh.



Image by Robert Childs, UMass Amherst

**NEW**

**OLD**

Egg-laying sites darken after a few weeks. The old one on the bottom is from the previous year.





Note the gnawing marks around the edge of this egg-laying pit.

A wound in the bark with these marks is characteristic of Asian Longhorned Beetle.

Image by Robert Childs, UMass Amherst



# How To Recognize

# Asian Longhorned Beetle (*Anoplophora glabripennis*)



Egg-laying sites chewed into smaller branches often leads to sap flow and foaming.



The sap and foam often attracts wasps, bees and ants







Image by Robert Childs, UMass Amherst

**The larvae are cream-colored, legless and initially feed right under the bark. Later, however, they tunnel into the wood.**

**There are many native species of longhorned beetles and their larvae are similar in appearance.**



# How To Recognize

# Asian Longhorned Beetle

(*Anoplophora glabripennis*)



A new beetle chewing its way out of the tree

Image by Ken Gooch, MDCR



Image by Robert Childs, UMass Amherst

After about a year, the larvae pupate and emerge from the tree as adult beetles. Exit holes are 3/8" to 5/8" in diameter and are almost perfectly round.



Image by Robert Childs, UMass Amherst

Egg Site

Exit Hole





Image by Robert Childs, UMass Amherst

**This sugar maple in Worcester, MA  
had over 600 ALB exit holes**



# How To **Report** a Potential Find of **Asian Longhorned Beetle**

From any State: Contact the USDA APHIS:

[http://www.aphis.usda.gov/newsroom/hot\\_issues/alb/alb\\_report.shtml](http://www.aphis.usda.gov/newsroom/hot_issues/alb/alb_report.shtml)

In Massachusetts: Contact either of the following

<http://www.massnrc.org/pests/albreport.aspx>

OR Call: 1-866-702-9938

